



Media Release

August 23, 2024
For immediate release
12:30 PM PST

Evacuation Alert rescinded for Komonko Creek wildfire

Nelson, BC: On the recommendation of the BC Wildfire Service (BCWS), the Regional District of Central Kootenay (RDCK) Emergency Operations Centre (EOC) has rescinded the Evacuation Alert for residents impacted by the Komonko Creek wildfire (formerly known as the Aylwin Creek wildfire), part of the Slocan Lake Complex. The area includes 124 properties and 54 parcel identifiers (PIDs) in Electoral Area H north of the Village of Slocan, along the Highway 6 corridor, including Red Mountain Road to the Village of Silverton. The majority of the area was on Evacuation Order starting July 20 through August 12 when the Evacuation Order was downgraded to an Evacuation Alert. See map below.

As of August 22, BCWS has categorized the Komonko Creek wildfire as “Being Held”.

EVACUATION ALERT RESCIND ADDRESSES ELECTORAL AREA H (124):

8550 CEDAR DR	8876 HIGHWAY 6	9301 HIGHWAY 6
8560 CEDAR DR	8905 HIGHWAY 6	9309 HIGHWAY 6
7912 HIGHWAY 6	8906 HIGHWAY 6	9315 HIGHWAY 6
7914 HIGHWAY 6	8909 HIGHWAY 6	9460 HIGHWAY 6
7916 HIGHWAY 6	8921 HIGHWAY 6	9465 HIGHWAY 6
7918 HIGHWAY 6	8926 HIGHWAY 6	9470 HIGHWAY 6
7923 HIGHWAY 6	8941 HIGHWAY 6	9480 HIGHWAY 6
8150 HIGHWAY 6	8942 HIGHWAY 6	9495 HIGHWAY 6
8651 HIGHWAY 6	8953 HIGHWAY 6	9501 HIGHWAY 6
8656 HIGHWAY 6	8961 HIGHWAY 6	9505 HIGHWAY 6
8670 HIGHWAY 6	9089 HIGHWAY 6	9510 HIGHWAY 6
8749 HIGHWAY 6	9150 HIGHWAY 6	9520 HIGHWAY 6
8751 HIGHWAY 6	9155 HIGHWAY 6	9530 HIGHWAY 6
8755 HIGHWAY 6	9185 HIGHWAY 6	9761 HIGHWAY 6
8760 HIGHWAY 6	9191 HIGHWAY 6 - 1	9788 HIGHWAY 6
8788 HIGHWAY 6	9191 HIGHWAY 6 - 4	9789 HIGHWAY 6
8821 HIGHWAY 6	9191 HIGHWAY 6 - 5	8010 LWR GALENA FARM RD
8822 HIGHWAY 6	9195 HIGHWAY 6	8012 LWR GALENA FARM RD
8851 HIGHWAY 6	9255 HIGHWAY 6	8014 LWR GALENA FARM RD

8016 LWR GALENA FARM RD	8173 RED MOUNTAIN RD	8470 RED MOUNTAIN RD
8018 LWR GALENA FARM RD	8201 RED MOUNTAIN RD	8473 RED MOUNTAIN RD
8021 LWR GALENA FARM RD	8230 RED MOUNTAIN RD	8479 RED MOUNTAIN RD
8171 OMA RD	8235 RED MOUNTAIN RD	8494 RED MOUNTAIN RD
8177 OMA RD	8237 RED MOUNTAIN RD	8497 RED MOUNTAIN RD
8180 OMA RD	8241 RED MOUNTAIN RD	8503 RED MOUNTAIN RD
8186 OMA RD	8250 RED MOUNTAIN RD	8521 RED MOUNTAIN RD
8195 OMA RD	8277 RED MOUNTAIN RD	8522 RED MOUNTAIN RD
8196 OMA RD	8296 RED MOUNTAIN RD	8526 RED MOUNTAIN RD
8019 RED MOUNTAIN RD	8297 RED MOUNTAIN RD	8527 RED MOUNTAIN RD
8020 RED MOUNTAIN RD	8310 RED MOUNTAIN RD	8530 RED MOUNTAIN RD
8046 RED MOUNTAIN RD	8321 RED MOUNTAIN RD	8545 RED MOUNTAIN RD
8070 RED MOUNTAIN RD	8370 RED MOUNTAIN RD	8559 RED MOUNTAIN RD
8088 RED MOUNTAIN RD	8383 RED MOUNTAIN RD	8576 RED MOUNTAIN RD
8095 RED MOUNTAIN RD	8391 RED MOUNTAIN RD	8580 RED MOUNTAIN RD
8099 RED MOUNTAIN RD	8407 RED MOUNTAIN RD	8590 RED MOUNTAIN RD
8102 RED MOUNTAIN RD	8413 RED MOUNTAIN RD	8595 RED MOUNTAIN RD
8112 RED MOUNTAIN RD	8418 RED MOUNTAIN RD	8596 RED MOUNTAIN RD
8141 RED MOUNTAIN RD	8425 RED MOUNTAIN RD	8067 UPPER GALENA FARM RD
8150 RED MOUNTAIN RD	8428 RED MOUNTAIN RD	8075 UPPER GALENA FARM RD
8157 RED MOUNTAIN RD	8446 RED MOUNTAIN RD	8085 UPPER GALENA FARM RD
8164 RED MOUNTAIN RD	8449 RED MOUNTAIN RD	
8165 RED MOUNTAIN RD	8465 RED MOUNTAIN RD	

EVACUATION ALERT RESCIND PIDs ELECTORAL AREA H (54):

011-818-221	017-919-517	013-147-978	026-566-397	016-718-232
011-818-140	017-919-525	016-717-333	016-366-930	029-528-861
011-818-204	028-810-074	016-800-915	016-615-981	011-057-505
011-818-131	017-919-533	027-022-277	009-803-653	016-614-682
011-818-191	028-810-066	018-045-901	016-366-948	016-616-235
011-818-263	028-810-040	007-538-278	009-834-443	016-718-267
009-234-900	027-656-071	009-644-326	016-626-125	016-813-499
013-787-527	027-656-063	028-731-590	016-616-065	024-694-886
014-869-721	027-656-055	030-187-877	010-350-420	015-440-559
009-167-552	027-656-047	026-566-371	009-994-947	010-909-575
009-167-544	027-656-039	030-187-851	010-568-051	

As of August 3, the Aylwin Creek and Komonko Creek wildfires merged at Enterprise Creek and moving forward are referred under the Komonko Creek wildfire, part of the Slocan Lake Complex. The Slocan Lake Complex includes the Aylwin Creek wildfire, Komonko Creek wildfire, Mulvey Creek wildfire, Nemo Creek wildfire, and Ponderosa wildfire. A complex is created when multiple wildfires are managed by a single

Incident Management Team, and resources and equipment are shared between all incidents in the complex.

Updates or changes to the Evacuation Alert or Order will be provided via the [RDCK website](#), [Facebook](#), and [X](#) as more information becomes available. For details about evacuation and emergency preparedness, along with other resources, please visit www.rdck.ca/eocinfo. The RDCK EOC public inquiry line is 250.352.7701 or 1.866.522.7701 (toll free).

For up to date information on current wildfire activity, conditions and prohibitions, call 1.888.336.7378 or visit www.bcwildfire.ca.

For more information about evacuations and emergency preparedness, along with other resources:

- [Current RDCK Evacuation Alerts, Orders and Rescinds](#) or call 250.352.7701
- [Sign up for RDCK Emergency Notification System to receive notifications](#)
- [RDCK web map](#)
- [Public weather alerts for BC from Environment Canada](#)
- [BC Wildfire – Interactive Map of Current Events](#)
- [Fortis BC Outage Map](#) or call 1.866.436.7847
- [BC Hydro outage map](#) or call 1.800.224.9376
- [Nelson Hydro](#) 1.877.324.9376
- [Drive BC](#) for highway closures and road conditions
- [For BC Air Quality Health Index](#)
- [Prepared BC](#)

Incorporated in 1965, the Regional District of Central Kootenay (RDCK) is a local government that serves 60,000 residents in 11 electoral areas and nine member municipalities. The RDCK provides more than 160 services, including community facilities, fire protection and emergency services, grants, planning and land use, regional parks, resource recovery and handling, transit, water services and much more. For more information about the RDCK, visit www.rdck.ca.

-30-

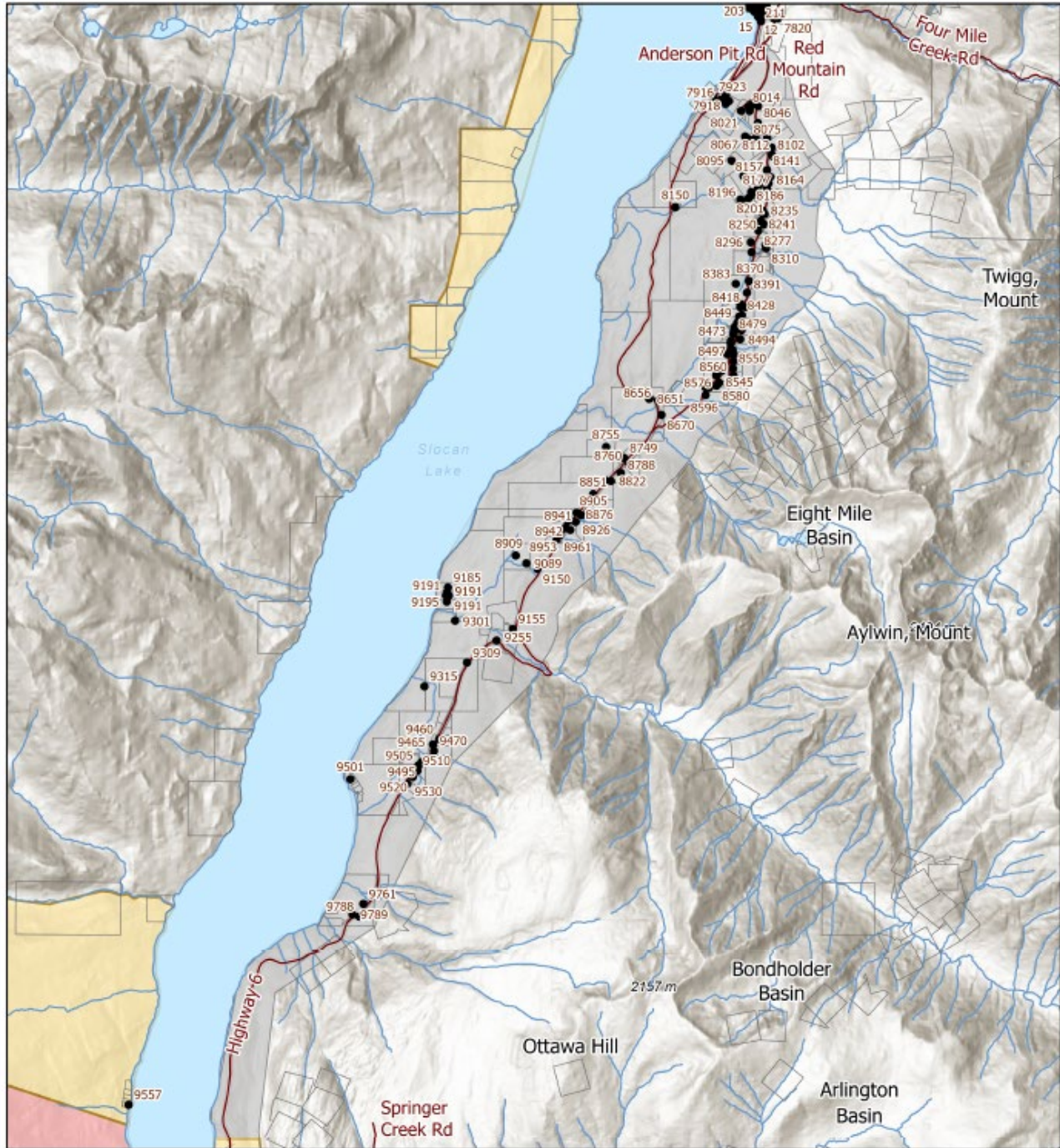
For further information, and media enquiries please contact:

EOC Information Officer

Regional District of Central Kootenay

Tel: 250.352.7701

Email: eocinfo@rdck.bc.ca



**REGIONAL DISTRICT OF
CENTRAL KOOTENAY
EMERGENCY
OPERATIONS CENTRE**

EOC Phone: 250-352-7701 or 1-866-522-7701
 Current Emergency Information:
rdck.ca/EOCinfo
 Register to receive emergency notifications:
rdck.ca/notifications
 To report a flood, landslide, spill or other hazards:
 1-800-663-3456

Aylwin Creek Wildfire (Komonoko Creek) Evacuation Alert Rescind

- Streets
- Addresses
- Legal Parcels
- Evacuation Alert
- Evacuation Order
- Evacuation Rescind

Map Scale: 1:78,022



The mapping information shown are approximate representations and should only be used for reference purposes. The Regional District of Central Kootenay is not responsible for any errors or omissions on this map.